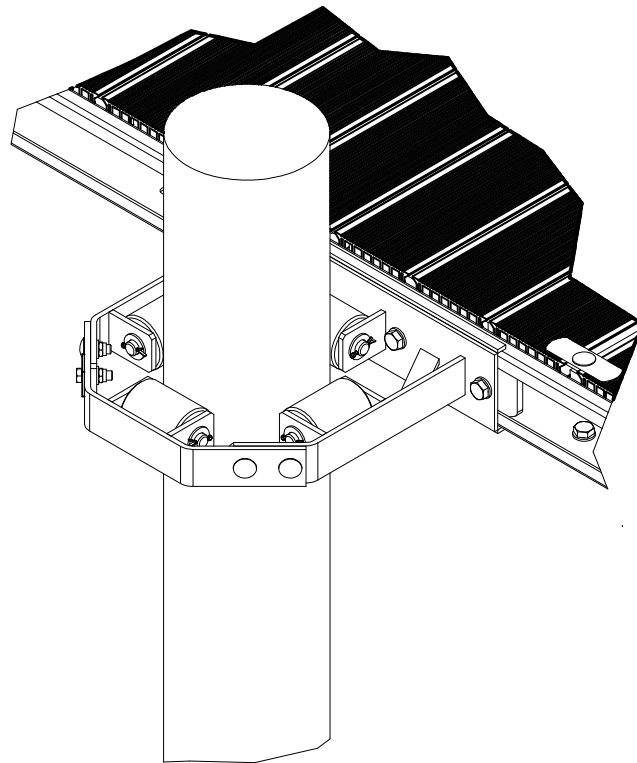
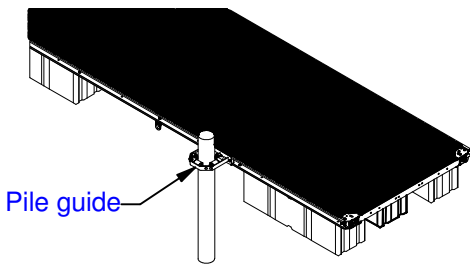


# Steel Pontoon Assembly of "Pile guides"

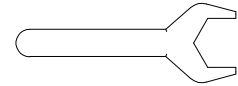




Necessary equipment:

Prestressing factor:

M12 = 87 Nm  
M16 = 210 Nm

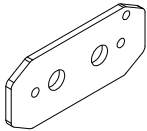


Spanners for M12 and M16

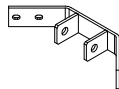
**NB!**

- Do not tighten until deformation of any steel parts.

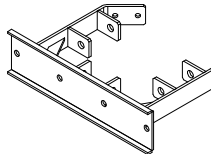
**PARTS**



Item 1 x 2



Item 2 x 1



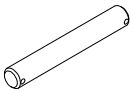
Item 3 x 1



Item 4 x 4  
M16 x 40 - DIN 933 VZ



Item 5 x 4  
M16 - DIN 125 VZ



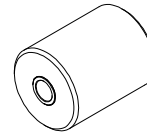
Item 6 x 1  
Axle A4



Item 7 x 8  
M20 - DIN 125 VZ



Item 8 x 8  
4 x 45 - DIN 94 A4



Item 9 x 4  
Wheel



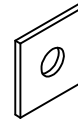
Item 10 x 3  
M12 x 35 - DIN 603 VZ



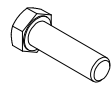
Item 11 x 4  
M12 - DIN 985 A4



Item 12 x 4  
M12 - DIN 125 VZ

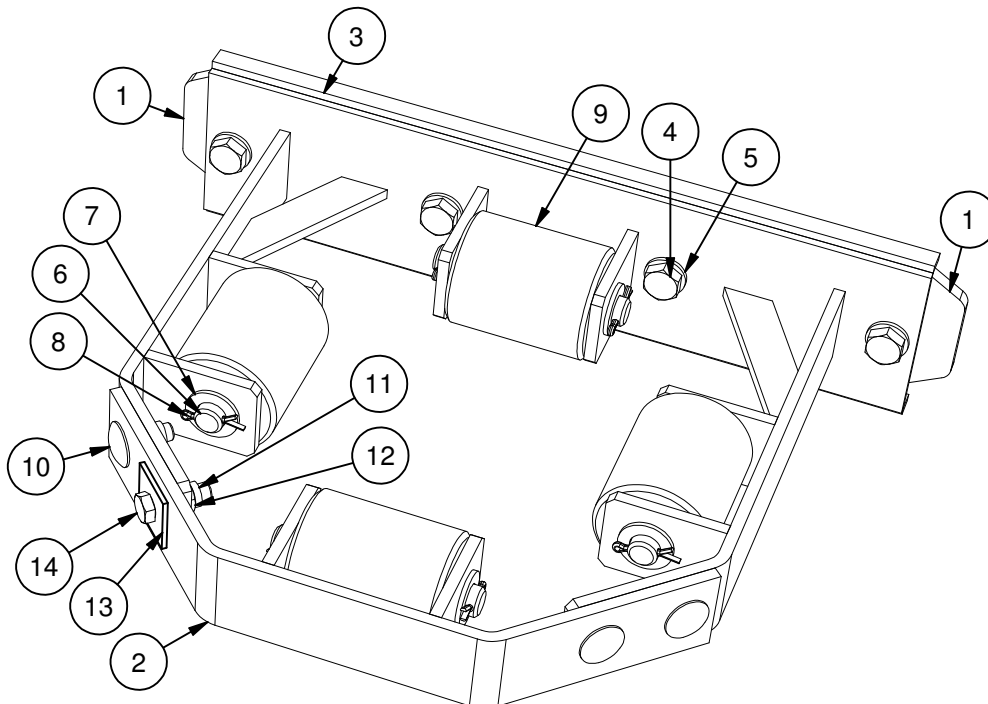


Item 13 x 1  
M12 DIN 436 VZ



Item 14 x 1  
M12 x 40 DIN 933 VZ

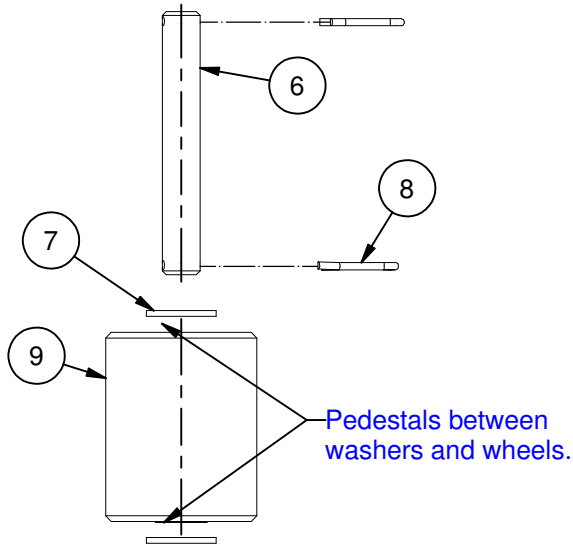
**1 Overview**



Dokument Info			
Dok Nr	Rev	Date	Approved
711-13-03	A	08.05.2006	RF

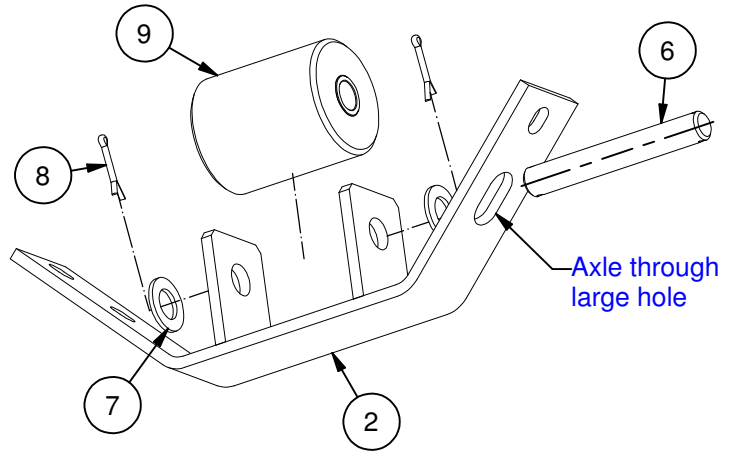
## Step 2

Asseby wheels

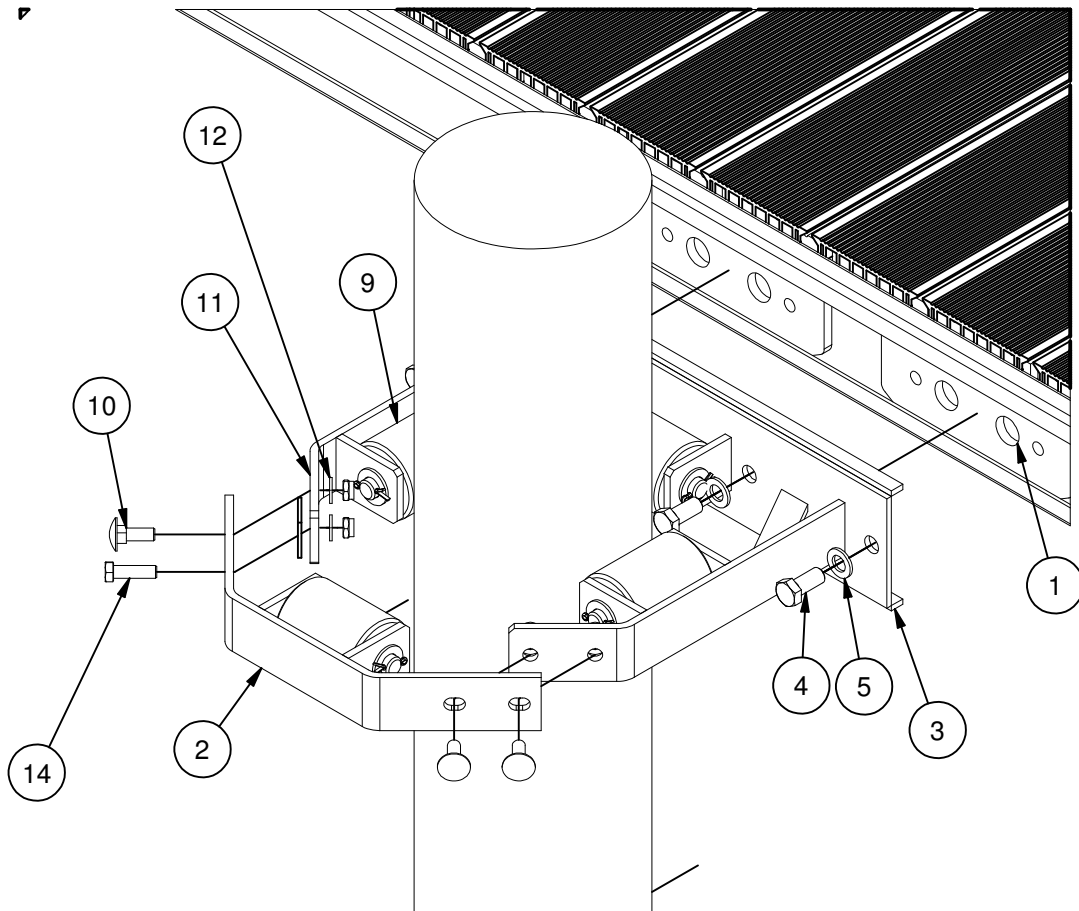


## Step 3

Assembly of wheel at outer guiding



## 4 Outer guiding and fastening av pontoon.



Dokument Info			
Dok Nr	Rev	Date	Approve
711-13-03	A	08.05.2006	RF